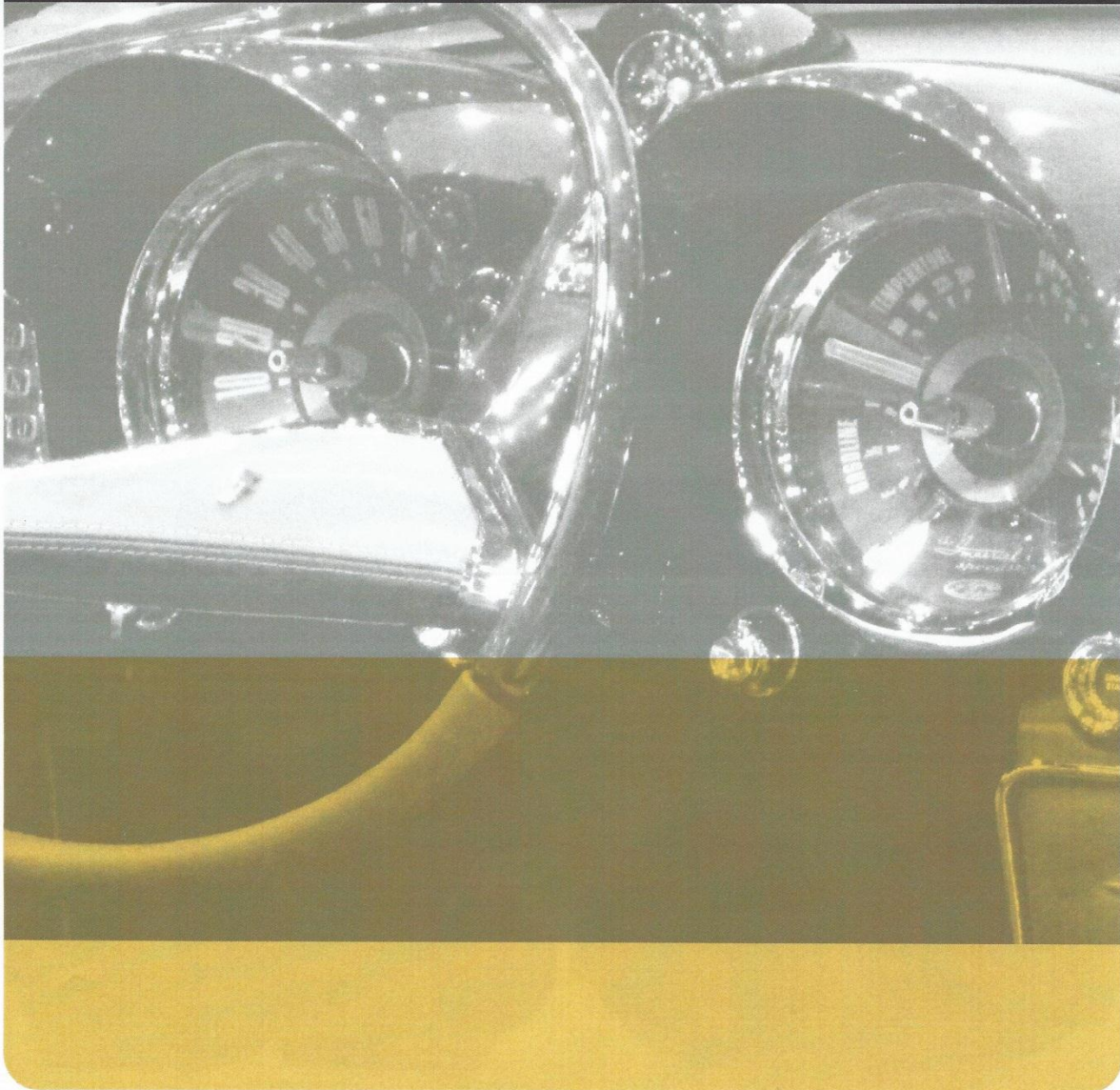




THE ORIGINAL PERIOD-STYLED AND THEMED INSTRUMENTS

NEWVINTAGEUSA.COM | MADE IN DETROIT

P 248.850.5482 | F 248.565.8291 | A 2415 BURDETTE, FERRDALE, MICHIGAN, 48220

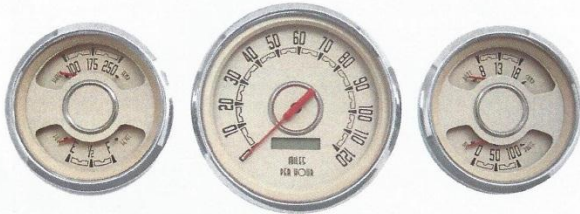


PRODUCT FEATURES

WOODWARD SERIES

The original Woodward series brings an original equipment feel to your dash with the high-style, bold graphics on a beige or black background featuring red contoured 3D pointer, plated inner ring and cover bezels on combo gauges. Domed glass waterproof lenses and hand polished stainless bezels cap off the look. No one has more combinations of functions, sizes and layouts than NVU in a period styled lineup.

If you are looking for an original style set to finish off your 30's, 40's or 50's resto mod, original or driver, this is the kit for you. Available individually or in kits that include all senders for installation: GM speed sender, pressure, temperature and adjustable fuel sender, all in one box ready to install. Kits are also available for Universal, GM and Ford/Mopar.



1940 BOMBER SERIES

Inspired by military sets, we have duplicated the feel of the very popular aircraft and military gauges of the 30's and 40's, but with modern technology. Why buy salvage yard gauges that don't match, or work for that matter?

We started with the military graphics and upgraded to domed lenses and stainless steel bezels for an upscale "5-Star General" appearance. The graphics are duplicated down to the smallest detail, and a white-tipped pointer adds to the effect. The mechanical speedometer features a trip odometer with reset switch. The patented bi-torque 2-1/16" gauges offer the modern technology behind the scenes to provide accurate readings. The New Vintage 1940 Series gauges are made in the USA and feature our 5-year warranty.



1967 SERIES

Our 60's themed gauge set brings authentic 60's and 70's style to your dash. We see so many muscle cars that look great but fall short with the "off the shelf" look to the dash. Our gauges are a great alternative to other brands; they look different but right. All instruments are made by hand in our shop in Detroit, where car parts should be made.

Our inspiration came from many vehicles from the 60's but we paid particular attention to the 67-68 Mustang. Those instruments had a very period look. We didn't set out to duplicate them, but rather take the feel of the era and interpret the graphics into these sets.



1969 SERIES

The first true 60 themed gauge set on the market with period look and modern stepper motor technology. 3-3/8" and 2-1/16 gauges fit aftermarket dash panels for a professional installation. Get the best of both worlds-classic looks with modern technology. We matched the mint green and captured the essence of the era with this set. As far as we know this is the first and only period look full sweep instrument kit available. Chrome bezels add to the look.



PRODUCT FEATURES

REDLINE SERIES

Spun metal look dials with through-the dial user selectable white or amber LED lighting. High style for high-end builds. Perfect for a pro-touring vehicle. Full sweep stepper motor gauges with peak recall and programmable warnings and outputs on 2-1/16" gauges.

The Redline Series is available in 6-gauge kits and individual gauges. Individual gauges include the standard speedometer and tachometer but also A/F ratio, EGT, Boost, N²O Pressure, oil and transmission temperature. Add on to a 6-gauge kit or class up your dash with individual gauges. You will not find another set like it any price.



64 1/2-70 MUSTANG

Complete your interior with a great new cluster from New Vintage. All 100% new parts create the dash you want, with the looks, quality and functions you need. Choose from our 60s inspired 67 series, or for an updated, Pro-Touring feel, take a look at the Performance line. For the Hotrodder, the 1940 Series is a perfect choice. Kits are available in several forms, from the basic, gauges and mounting bracket all the way up to fully assembled with new molded panel, and complete pre-wired harness. Kits come complete with everything to install. Choose the basic kit with mounting bracket and gauges - you build using your own panel, or the complete assembled pre-wired package with reproduction camera-case panel.



67-68 CAMARO PACKAGES

Our exclusive molded mounting kit installs any of our 4-3/8" gauges into the factory 69 Camaro dash openings. The design makes the installation look like it came from the factory. Molded and CNC cut pockets that fit into the stock dash for a factory installed look. Install any New Vintage 4-3/8" gauges. You can use a 2 gauge set, or our 4-3/8" speedo and tach, mounting the minor gauges in the console, its up to you. Probably the cleanest solution available on the market today. Fits factory original or aftermarket reproduction dash bezels.



70-72 CHEVELLE SS, EL CAMINO SS, MONTE CARLO SS

The New Vintage custom package for 70-72 Chevelle SS updates your stock cluster with new components, technology and great looks you have come to expect from NVU. Each kit is designed to have a factory installed appearance with some upscale touches.

Great features include full size factory match 0-90 fuel gauge, programmable speedometer, tachometer and discreet temperature, oil pressure and voltmeter all in the factory locations. Kits include gauges, mounting bracket to install in your factory carrier (not included), LED turn signals, temperature and pressure senders, and even a GM style speed sender.

With two styles and 3 colors, choose the design that fits your vehicle. Choose the OE inspired black dial with retro styled mint green graphics, or the white or black Performance for an upgraded, performance look.



PRODUCT FEATURES

We are asked many questions about the technology, components and quality of material we use, in comparison to the competition. This page should answer most of your questions. If you have any other questions or concerns, feel free to ask.

All of our products are built right here in Detroit. While we are not a glass or plastic manufacturer, we source these small parts from companies either right here in town or in the US. While most parts are made here, some parts of course like some resistors or small electrical components are imported due to lack of availability in the US. We are however, the *only* instrument manufacturer that designs and prints all of our dials in house. Our in-house dial shop prints every single metal and perimeter-lit dial we use, even our custom packages.

The technology we have available creates a uniquely durable, accurate product while our design staff keeps the product line fresh and themed for your vehicle. Below you will find information you may need to help you with your questions regarding quality, operation and function of our products:

Lenses and bezels: All of our bezels are either hand polished stainless steel, not chrome, for a durable finish. These meet all marine salt corrosion specifications. All lenses are glass except on clock with through-hole adjusters which are high impact polycarbonate. All gauges are watertight from the front (cases, movements, durability). We challenge *any* manufacturer to publish their durability and function standards.

NEW VINTAGE USA (NVU) has been bringing period styled and themed instruments with the highest quality, style and accuracy to the aftermarket for 10 years. What is period styled and themed? It's a way of looking at the vehicle as a whole and bringing all of the visual elements together as a cohesive theme. NVU has brought the period style and themes that look great in most any dash. Have a traditional hot rod? Take a look at the 1940 series. Building a hi-end pro-touring car? The Performance or Redlines might be right for you. Not only do NVU products look great, they have the highest quality components, all MADE IN DETROIT. All NVU products feature a 5-year warranty.



PROGRAMMABLE SPEEDOMETERS

New Vintage Programmable speedometers are easy to set-up and can use inputs from virtually any speed sender, OE or aftermarket the units will even accept input from many PCMs, all of this without any converters or conversion boxes. Speedometers feature a remote mount programming button to keep the gauge face clean and real glass lenses. Programmable speedometers are easily calibrated by hitting the button, driving a mile and hitting the button again, it's as straightforward as that. No confusing DIP switches. Calibration is easily accomplished any time tires or gears are changed. Our speedometers have accumulated over 5,000,000 miles of successful use reflecting their popularity and robustness.

ELECTRONIC TACHOMETERS

NVU tachometers will accept inputs from various sources. A high voltage coil input, a low voltage CDI box, ignition box, or PCM. The fully integrated circuitry allows for years of trouble free use.

FULL SWEEP STEPPER MOTOR GAUGES

New Vintage full-sweep stepper motor gauges have the highest technology available, the same movements and systems used on the most elite sports cars today. Stepper motors take input from precision senders and translate it through microprocessors and into electronic impulses which drive the stepper motors to precise degrees in movement, down to .3 degrees of rotation. 2-1/16" stepper motor gauges also feature our peak hi/low recall and warning functions. Gauges can trigger a switch, lamp or flash the dial at any point that you program. They also feature color-coded harnesses for easy hookup and maintenance.

SHORT SWEEP BI-TORQUE GAUGES

Short-sweep gauges feature a 90 degree sweep, which has been an industry standard for years. Our patented bi-torque and air-core movements use voltage or resistance for a wide variety of ranges. Air core gauges are traditionally perimeter-lit and are based on our Military and Commercial lines.

PERIMETER LIT GAUGES

New Vintage gauges with perimeter lighting use a combination of incandescent bulbs and LEDs in some cases to flood the dial with light from around the perimeter, hence the name. The light flows around the dial and is reflected from the case sides and light mask, back onto the dial. It is a more traditional way of lighting the dials, and is easy to view at night. Woodward, 1940, 1967 and performance lines feature perimeter lighting.

LED BACKLIGHTING THROUGH THE DIAL

NVU LED through the dial technology is achieved with LEDs behind a OEM quality, UV resistant polycarbonate dial, hand-screened for quality. The light shines through certain parts of the dials for hi-definition viewing at night. Our pointers have also been engineered for the best, most even lighting. 3-3/8 and 2-1/16" backlit gauges feature user-selectable white or amber LED lighting. Redline 1969 and 1968 Series gauges feature backlit dials.